

COMPRESSED AIR
PUSHING YOU FORWARD

COMPRESSORS- CONTROL

RENNER CONNECT EASY



 **MADE IN
GERMANY**

RENNER
Kompressoren 

COMPRESSED AIR PUSHING YOU FORWARD

SAVE ENERGY AND PROTECT THE ENVIRONMENT

The RENNERconnect Easy management system ensures efficient interaction between a maximum of four compressors in your compressed air system. You can achieve the greatest energy savings with this superordinate management system. RENNERconnect Easy regulates the performance of your compressors exactly to the respective compressed air consumption required.



Features

- Controls and optimises the interaction between compressed air generation and consumption.
- Adjustable cyclical base load changes, for even utilisation of the compressors.
- Up to 4 compressors of the same or different type in a network, of which max. two (optional four) are speed-controlled.
- Pressure band optimisation through maximum pressure reduction.
- Recording of all data, e.g. for energy management and to detect rising leakages.
- Simple connection of RENNER compressors with patch cable.
- Interface module for the integration of third-party compressors optionally available.
- Protection of the RENNERconnect Easy control system by means of key switches for the operating modes.
- Web-interface for remote monitoring and control.

WALL CASE

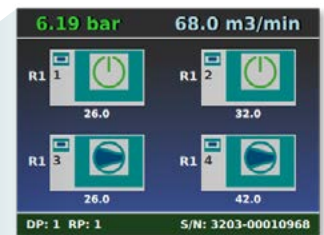
- Easy to assemble and maintain.
- Door hinge right with lock.
- Powder-coated steel plate.
- Protection Class IP54.

KEY SWITCH

- Off / automatic (demand-oriented compressed air supply).
- Continuous operation (without compressed air management).
- Weekly timer (e.g. night or weekend switch-off).

RENNERSIMPLY- CONNECT

- 2x RJ45-socket for a simple and fast communication connection.
- Modbus direct connection to RENNER compressors with RENNERtronic Touch and RENNERtronic Plus Touch.
- RS485 communication protocol via interface module for third-party compressors.



VISUALISATION ON 3.5" DISPLAY

- Currently working compressors.
- Current compressor priorities.
- Residual cycle time.
- Set pressure switching points Pmin and Pmax.
- Weekly time switch.
- Real-time clock.
- Status of compressors (operating mode / fault).

RENNER GmbH
Kompressoren
Emil-Weber-Straße 32
D-74363 Güglingen
Tel. +49 7135 93193-0
info@renner-kompressoren.de
renner-kompressoren.com

